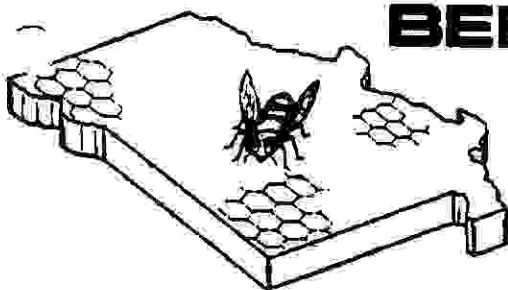


# MISSOURI STATE BEEKEEPERS ASSOCIATION



PRESIDENT  
JIM ROBINS  
800 Rickey Road  
Kennett, MO 63587  
314-888-5625

SECRETARY  
MARILYN SMITH  
4301 Walnut Tree  
St Charles, MO 63301  
314-441-1780

1ST VICE-PRESIDENT  
HENRY BOECKMANN  
619 Mendelsohn Drive  
Kirkwood, MO 63122  
314-821-1856

TREASURER  
TRUMAN C. HARDIN  
1829 W. Washita  
Springfield, MO 65807  
417-866-2802

2ND VICE-PRESIDENT  
DR. FLERNOY JONES  
1215 Surella Drive  
Columbia, MO 65201  
314-445-5760

EDITOR  
CAROL R. BOECKMANN  
619 Mendelsohn Drive  
Kirkwood, MO 63122  
314-821-1856

VOLUME 18

QUARTERLY NEWSLETTER  
SEPTEMBER 1980

NUMBER 3

DEAR BEEKEEPING FRIENDS,

As another beekeeping season winds down to a lazy hum, the 1980 Fall Meeting of the Missouri State Beekeepers' rushes to meet us. This Fall's Meeting will be held on Saturday, October 25, in the meeting room of the Nelson Community Center in Lebanon, Missouri. Lebanon is located 40 miles NE of Springfield on Interstate 44 (Hwy. 44).  
**MARK YOUR CALENDARS!!!**

All members are invited to attend the Friday evening Executive Board Meeting which will be held at the Wyota Best Western (Highway 66 East) in Lebanon at 7:30 p.m.

If you wish to stay overnight either Friday or Saturday, the Laclede County Beekeepers' Association compiled the following list of motels with details.

- I. Wyota Best Western - Highway 66 East - 417/532-6171  
Singles \$18.00 - Doubles \$23.00
- II. Shepherd Hills Motel - City Route 66 West - 417/532-3133  
Singles \$15.75 - Doubles \$20.94
- III. White Sands - City Route 66 West - 417/532-3128  
Singles \$12.56 - 2 in a room \$14.66 - Doubles \$18.04
- IV. Holiday Inn - Business Loop 44 West - 417/532-7111  
Singles \$23.95 - Doubles \$27.00

Numbers I, II and IV have restaurants at the motels.

The complete agenda for the Saturday meeting can be found on the last page of this newsletter.

## ARTS AND CRAFT DISPLAY

The Saturday mornin' meetin' will begin with a presentation of the items in the arts and crafts display on Bee Craft. The success of this display depends on each of you. This is only a display, not a sale!

If you have an item that you are willin' to display, please bring it with you or send it with another member of your local association. These items depicting bees, beekeeping, honey, etc. could be

ceramics	macrame	metal work
embroidery	applique	sculpture
crewel work	quill work	jewelry
crocheting	quiltin'	pottery
knittin'	candles	stain glass
sewin'	tole paintin'	paintings
needlepoint	leather work	batik

ANY HANDMADE ITEM! These items would provide a feast for the eye and maybe an idea for a Christmas present to your favorite beekeeper.

Please attach your name and local association name to each item. If you have similar items for sale, you could make your card available with price, name, etc. and this would be announced during the presentation so that individuals could contact you on a one-to-one basis.

Everyone will have a chance to get a close look at the items during the mornin' coffee break and at the beginnin' of the lunch hour. If you have any questions, please call Carol Boeckmann (314) 821-1856.

\* \* \* \* \*

The movie "Mating Behavior of the Honeybee" will be shown at the Saturday mornin' meetin'. This movie "shows the conditions under which the queen bee and drones mate. Dr. Norman Gary explains some of the honeybee mating experiments that he has set up and carried out. Specially designed equipment is shown."

\* \* \* \* \*

## MAIN SPEAKERS AT THE FALL STATE MEETING (in alphabetical order)

The Reverend Clarence Feeney, a member of the Ozark Beekeepers' Association, was scheduled for last spring's meeting but was unable to attend due to a conflict in time with a ministerial meeting. He has accepted our invitation for the Fall Meeting. His topic Honey Plants is one in which he is quite knowledgeable. His program will include a slide presentation and a question-and-answer period. Reverend Feeney is an excellent speaker whose presentation promises to be interesting and informative.

Mr. Richard Harrell, Sr. of Hayneville, Alabama, will speak on his beekeeping operation. The W. E. Harrell and Sons beekeepers consists of approximately 6,000 colonies. They ship 15,000 packages yearly, raise 450 to 500 queens daily during April through September, and have developed their own strain of Three-Banded Italian bee. They also own their own woodworkin' shop. In addition to providing a glimpse into the world of commercial beekeeping, Mr. Harrell would be able to give his opinions to questions such as

When should I order my packaged bees?  
 How should I install my packages?  
 What should I have ready when the packages arrive?  
 What care do the bees require immediately after being situated in their new home?  
 When should I requeen?  
 What are some of the methods of requeening?  
 How can I tell that I have a healthy young queen?  
 and many, many more!!

Mr. Jim Stewart, an experienced beekeeper from Matthews, Missouri, will address himself to the subject of Fall Practices and Winter Preparations. Those members who know Jim find him very well-spoken and knowledgeable. So gather your questions and problems on Fall and Winter Management -

How should I prepare my extracted combs for storage?  
 Where should I store drawn comb for the winter?  
 After a summer such as this past one, what preparations do the bees require to make it through winter?  
 How much food should be left for each colony?  
 What kind of feeding is recommended?  
 How much and in what manner should I ventilate my colonies?  
 How much room should a colony of bees have for wintering?  
 What can I do about my weak colony?  
 and on, and on, etc.!!!

\* \* \* \* \*

#### A WORD OF THANKS

At this time it seems appropriate to thank Mr. Bill Wagner and the Members of the Laclede County Beekeepers' Association for hosting our Fall State Meeting. The Laclede County Association is one of our newest and most active local associations. Their cooperation and enthusiasm is evident in their acceptance of the host position for this Meeting. Also they compiled the motel and restaurant information and acted as liaisons in acquiring the Nelson Community Center. At present, they are contacting the equipment suppliers in order to arrange for materials and displays and they are making arrangements for our Saturday lunch. They also plan to publicize the

meeting in their area newspapers and contact the individuals who attended the beekeeping short course in Lebanon.

THANK YOU VERY MUCH to the Individuals of the Laclede County Beekeeper Association who are certainly an asset to beekeeping across the State.

\* \* \* \* \*

# 1980 STATE FAIR HONEY BOOTH

## EXPENSES

### Beginning inventory (from last year)

16-Kelly COOKBOOKS @ 12¢	\$7.92	
16-Kelly HOW TO @ 91.3¢	14.61	
141-Calif. COOKBOOKS @ 43.3¢	61.05	
3-Taylor JOYS @ 2.46	7.30	\$90.96

### 1980 Purchases for stock

Dadant Inv. #52302 & 52331	\$337.64	
Craig Oliver - 12 honey pots	36.71	
Kelly - 96 HOW TO	67.65	
Calif. COOKBOOKS 100 (1980)	42.00	
Chas. Wills 7 H.T. Honey pots	20.00	
" " 235 Kelly COOKBOOKS	32.90	
" " 5 quarts Honey	18.70	
Osage Honey Farms Inv. 9679	1712.67	\$2312.76

### Misc. Expenses

Chipboard for table tops	\$9.34	
Formica for tops	12.30	
Gold cloth - table skirts	15.77	
Crepe paper - show cardboard	4.45	
Plastic bucket	1.80	
5 Baggies for Queen Candy	2.95	
Postage (Rubber stamp to Geo.)	1.35	
Register tape	.22	
2M paper bags 2M stirrers	26.64	
Bank money orders	1.25	
Booth contract	300.00	
Telephone Expense (Fair)	44.12	
Season tickets & parking	54.00	
Camping - 2 vehicles & camper	65.00	
Mileage	72.00	
Food - 11 days, 2 meals each day for 3 people	87.23	
Sales Tax on sales	175.79	\$904.23

### TOTAL EXPENSES

\$3307.95

## REMAINING INVENTORY

1- Honey pot (Oliver)	\$3.01	
57- Kelly HOW TO @91.3¢	52.04	
57- Dadant FIRST LESSONS @74.0¢	42.52	
70- Dadant COLORING BOOKS	14.77	
4 - Humbly Bees @ 5.51	27.24	
31- Skep Honey Pots @1.43	51.43	
2 - Formica Tabletops	21.72	
Gold cloth	15.77	
Plastic bucket	<u>1.16</u>	\$230.33

TOTAL EXPENSES	\$337.95
LESS REMAINING	<u>239.33</u>
	\$3077.62

TOTAL SALES AND MONLY DEPOSITED	\$4,035.35
LESS EXPENSES	<u>3,077.62</u>
PROFIT	\$957.73

The Fair committee wanted to have as wide a selection for sale in the booth and ordered accordingly. We wanted to sell honey ice cream in small cartons as does the Illinois Association at their State Fair, but we ran into more red tape and problems. The telephone bill in the expense report was the result of trying to solve the problems. Most problems were settled but two and those are being worked on for next year.

Seems all the fees and tickets were increased by the Fair Board to try to raise more money for them and it only cost the Association in the way of profits. The crowds were good and we estimate some 12,000 people sampled the honey furnished by George Vanarsdall. We sold approximately 207 pieces of cut comb and 1502 lbs of honey. Sales were brisk at times and then we had a while to rest.

The committee would like to give recognition to the following who so generously gave of their time, money, and efforts in manning the booth. They were splendid.

BOONE REGIONAL - Mr. and Mrs. Fowler Young  
 Mr. and Mrs. Stanley Whitaker  
 Mr. and Mrs. Wayne Taylor  
 Mr. and Mrs. Elmer Parton  
 Mr. and Mrs. Stanley Garton

(continued on next page)

EASTERN MISSOURI - Mr. and Mrs. Larry Hensley  
Mr. and Mrs. Gene Kaufmann

MIDWESTERN - Joe Maher  
Waldo Mayers  
Harry Knowles  
Walt Dilelow

CENTRAL MISSOURI - Crai Oliver (2 different days)

OZARKS - David Mason

TWO RIVERS - Mr. and Mrs. Bill Downing and Son  
Del Scott  
Al Schwendemann

Joe Mayer drove from Southeast Missouri to be with us for two days.

A public note of thanks to George for his help, time, and efforts in furnishing and delivering the honey to Sedalia for our use. Without him the sales would have been impossible.

Truman Hardin  
Charles Wills  
Mike Roling

\* \* \* \* \*

From the HONEY LIPPERS BEE ASSOCIATION, Jean Yemm - Reporter

Beekeepers from Iron and Madison County met Sunday, July 13, at the Methodist Church in Fredericktown with Bill Osborne, President, presiding. Those who joined at the March meeting and elected to pay dues to the Missouri State Beekeepers Association have received their first quarterly newsletter from that organization. Mrs. Darlene Lerche, Secretary-Treasurer, announced that dues are \$2.00 for the local group and that the state dues are also \$2.00 now but will be \$3.00 for 1961.

Several attractive, descriptive names were submitted by the members, but a clear majority voted for "Honey Lippers Bee Association", the entry of P. H. Reeves of Arcadia Valley. Mr. Reeves won a wooden "honey lipper", a utensil for serving honey without dripping.

Bob Lerche showed a sample of a product containing 3% sugar, which might be useful for feeding bees during the winter and which is considerably cheaper than white sugar.

Members exchanged ideas about removing surplus honey. One beekeeper did some extracting in June and learned that outdoor extracting cannot



be done without loss of much honey and some bees. When he left the job for a few minutes, he returned to find thousands of bees drinking up the honey in the extractor and the storage tank. Another warned of the danger of creating a robbing pattern by leaving honey exposed and losing many bees in the ensuing battles. Some beekeepers prefer to wait until after the first frost to remove any honey; this timing ensures that the bees have adequate winter stores in their brood chambers and that there will be few bees working up in the supers when they are removed.

Except for a few who removed some surplus honey in June, nearly everyone expects the honey supply to be far down because of the heat and drought. Nectar-producing plants have bloomed poorly or not at all. One of the old timers said that he expected the bees were now existing on the honey they made in May and June. One beekeeper with a hive resting on a platform scale has noted a daily variation of only one pound, and some days there is actual weight loss of a pound.

Other conditions discussed were the best orientation for the entrance of a beehive, the problems of ants living on the inner cover of a hive, and the meaning of the hanging out that most bees seem to be doing in July.

The Honey Diggers have agreed upon three meetings per year, with the next one set for October 19, 1960 at 2:30p.m. at the Extension Office in the Court House at Fredericktown.

\* \* \* \* \*

#### PROGRAMS AT BEEKEEPING MEETINGS

With only a few months left in 1960, the officers and/or program committees of the local associations face the task of lining up a new year's schedule of interesting, diversified, and informative programs for their meetings. If you have ever participated in this you know that it is no easy task!

In the interest of possibly offering some ideas and at the same time giving all a peek at the activities of some of our local associations, the 1960 programs of two of the local associations are here summarized.

#### MIDWESTERN BEEKEEPERS' ASSOCIATION

January - Slide presentation on "Spring Management" by Paul Cleas. Question and answer session followed. Fleta Rose was honored as 1979 "Beekeeper of the Year". Entertainment by Jon O'Neal at the piano.

- February - Demonstration of the installation of package bees by Bob Dye. "He installed a package of white bees (styrofoam packing pieces) showing the proper way and location where the queen should be installed in the hive. This was an excellent way for anyone who may desire to show a class the principles of this aspect of beekeeping without the possibility of getting stung. The packing pieces are about 3/8" in diameter and about 1 1/2" long."
- March - George Vanarsdall from Osage Honey Farm led a discussion on the making of splits. Members on the discussion panel were Paul Clegg, Bob Dye, Joe Maher, and Roger Nichols.
- April - Movie "The Beekeeper" shown by Tom Baker. Mr. Baker then installed a package of bees on the parking lot.
- May - The production and packaging of comb honey presented by Chester Crain.
- June - A joint meeting with the Northeastern Kansas Beekeepers' Association. A series of color slides shown by Paul Clegg. Discoveries in keeping bees presented by Roger Nichols. American Honey Queen Frances Bean discussed her travels and experiences. The Northeastern Kansas Honey Queen Charlotte Beam also gave a short talk. Willard Madole spoke on various gadgets.
- July - "The program was presented by Roger and Sue Nichols and Charles Perrin. Roger spoke on how honey is judged at the State Fair. Many points were brought up about containers, quality of honey, making sure honey is entered in the right category, what to look for on frames of sealed honey, observation hives, moisture content, lack of foam on jars, and cleanliness. A device was displayed that was built by Chester Crain utilizing special glass that allows you to see the impurities in the jars of honey easily."
- August - Picnic with games and prizes. Example: A contest to see how long it takes a couple to assemble frames. Honey judging contest. Observation hive display. Table set up for honey cooking.

The above information on the activities of the Midwestern Beekeepers' Association was taken from the monthly newsletters edited by Mr. Harry Knowles.



## EASTERN MISSOURI BEEKEEPERS' ASSOCIATION

At the beginning of the year it was decided that each month would contain two special features - the "Corner of the Month" display and "A Quik-Run-down for that Month in Beekeeping". "The Corner of the Month" is a display set up before the meeting and briefly explained or presented at the opening of the meeting. The members would take a closer look after the meeting. "The Quik Run-down for that Month in Beekeeping" would be a verbal presentation of 15 minutes to a half-hour by the President consisting of what beekeepers should be doing at that particular time of the year.

January - "Corner of the Month" was a display of the bee magazines, newspapers, and some books available to beekeepers. The featured book was The Hive and the Honeybee.

The movies "The Beekeeper" and "Bees and Honey" were shown.

February - "Corner of the Month" was a drawing of a special bottom board and another of a clearer board which Gene Kaufmann designed. A bottom board and a clearer board were given as attendance prizes at the conclusion of the meeting.

A presentation and discussion on "Making Equipment" was given by Wally Wright.

March - "Corner of the Month" was a display of arts and crafts concerning beekeeping. Things to make for the beekeeper in your life by Carol Boeckmann.

Two sets of slides presented by Larry Hensley entitled "Bees and Flowers" and "How Flowers Attract Bees". Also the personal slides of Gene Kaufmann showing flowers that bloom in the area at each season.

April - "Corner of the Month" was a group of trees brought in by Gene Kaufmann. These were given as attendance prizes.

Installation of a package of bees on the parking lot of the community center.

May - "Corner of the Month" was a presentation of gifts that can be bought for the beekeeper, such as jewelry, T-shirts, etc. Presented by Carol Kaufmann.

A set of slides were shown on the commercial beekeeping operation of Joe Holt in the State of Washington.

- June - Picnic at the home of Ken Schaefer. Soda, ice cream, swimming, and games. Manipulation of Mr. Schaefer's hives. Attendance prizes.
- July - Demonstration of extracting honey by Larry Hensley.
- August - "Corner of the Month" was a display of Dangers to Bees, such as birds, skunks, possums, etc. Many members had interesting and entertaining stories of their experiences with such critters.
- "Bee Stings and Allergies" given by Dr. Raymond Slavin from the Department of Allergies at St. Louis University.
- September - "Corner of the Month" was a display of books on wildflowers. The featured book was Missouri Wildflowers by Edgar Denison of the Missouri Department of Conservation.
- Slide show on flowers given by Mr. Ken Peek, the Manager of Instructional Services at Shaw's Garden.
- October - "Corner of the Month" was a display concerning propolis.
- The topic of "Wax Rendering" was presented and discussed by Bob Graham.
- November - This meeting is traditionally the honey judging and baking contests.

News from the secretaries of the other local associations on the activities and meetings of their organizations would be greatly appreciated and printed. Send to Carol Boeckmann, 619 Mendelsohn Drive, Kirkwood, Missouri 63122.

\* \* \* \* \*

LET IT BE KNOWN . . .

Taken from an article in Fortune magazine.

HOW BOTH THE BUSY LITTLE BEE?

James Gould, 35, ethologist Princeton University

. . . James Gould, a student of animal behavior at Princeton, has been injecting new subtlety into the instinct vs. learning controversy by demonstrating that even learning has instinctual origins, and, conversely, that instinct is largely governed by learning. Gould confines most of his attention to such social insects as honeybees, usually regarded as among the most programmed creatures of all.

. . . Gould (carried out) an experiment to resolve a controversial question about how bees communicate vital information to one another - about locations of flowers, for example - by dancing. . . .

Recently, Gould has focused on the rigid, computer-like sequence of steps that bees follow in gathering honey. . . . Possessing only crude, near-sighted vision, bees appear to lack innate ability to tell which kinds of flowers are nectar-bearing; they find out by trial and error. When they approach a new species of flower, it's as if a sequence of steps in a computer program were turned on one by one. They learn to recognize that species in the last two seconds before landing on the flower - and only then. They learn to recognize that flower's scents in the first second or so after landing on it - and only then. They apparently calculate their homeward course, taking bearings from the sun, in the first couple of seconds after leaving the flower - and only then.

Bees even have to relearn the appearance and location of their own hive afresh each day, at the beginning of the morning's first flight. If the hive is moved during the night they have no trouble; if it is moved during the day, they are at a navigational loss and rediscover it only by blundering upon it.

Gould maintains that analogous, if more subtle, learning programs underlie human behavior, though we seldom recognize it. "We are blind to our own blindness," he says. . . .

\* \* \* \* \*

Taken from the September 1980 BEES AND HONEY from the University of Illinois at Urbana-Champaign.

#### A NEW BULLETIN ON WASPS--YOU MAY NEED IT THIS FALL

"Dr. John F. MacDonald has recently published a bulletin about the social wasps of Indiana. Many of the species described and discussed are found in other midwestern states including Illinois. However, we are not yet certain whether the German yellow-jacket, *Vespula germanica*, present in Indiana, has moved into Illinois on its westward migration. This wasp will have the most impact on beekeepers because it generally nests in close contact with humans and it scavenges food from human refuse and garbage. The wasp may also damage honey bee colonies, as it does in New Zealand, by entering hives to eat honey while the bees are clustered during cool weather.

The new bulletin is titled "Biology, Recognition, Medical Importance and Control of Indiana Social Wasps" E-91. Cooperative Extension Service, Purdue University, West Lafayette, Indiana 47907. Single copies are sent free on request.

\* \* \* \* \*

May 30, 1960

Mrs. Marilyn Smith, Secretary  
4301 Walnut Tree  
St. Charles, Missouri 63301

Dear Mrs. Smith:

Please find enclosed a copy of the revised By-Laws which the committee has prepared for consideration by the Missouri State Beekeepers' Association at the next Fall meeting.

The attached proposed copy was prepared by the committee as per the request of the Association at the Spring meeting on March 22, 1960, and Jim Robins.

The proposed changes of the By-Laws would necessarily be handled as directed and outlined by Article XI of the present By-Laws. That is any changes of the By-Laws may be considered at the Fall meeting if a copy is mailed to each member at least 14 days prior to the meeting.

We request that a copy of the proposed By-Laws be mailed to each member with the meeting notice.

The committee which prepared the proposed By-Laws is as listed: Chester Crain, J. F. Maher, and A. W. Mayers, Chairman.

If you have any questions, please contact me.

Sincerely,  
A. W. Mayers

1814 New Jersey  
Kansas City, Kansas  
66102

In accordance with the request in the above letter, the following pages include the complete proposed By-Laws for the Missouri State Beekeepers'. Please read carefully and bring your copy to the Fall State Meeting. During the business session the By-Laws as here stated will be discussed and voted upon.

## MISSOURI STATE BEEKEEPERS' ASSOCIATION BY-LAWS

## ARTICLE I - Name

The name of the organization, a non-profit association, shall be the Missouri State Beekeepers' Association.

## ARTICLE II - Purpose

This Association is formed to engage in any activity which will promote the common interests of beekeepers, and the general welfare of beekeeping, in the State of Missouri.

## ARTICLE III - Membership

Persons interested in beekeeping, and persons engaged in the beekeeping industry who pay annual dues as provided in these By-Laws shall be members of the Association. Each member present at any meeting of the Association shall be entitled to one vote. There shall be no voting by proxy.

## ARTICLE IV - Dues

## Section 1

The dues shall be four dollars (\$4.00) per calendar year except as set out in section 2, below. Dues paid at the Annual meeting, each fall shall be considered as dues for the next succeeding calendar year. Dues will not be pro-rated for a previous member.

## Section 2

If the dues of any member is paid through or by a local Association of which he is a member, his dues shall be three dollars (\$3.00) per calendar year.

If the member is not a member of a local Association, his dues shall be four dollars (\$4.00) per calendar year and paid directly to the Treasurer.

All dues shall be forwarded to the Treasurer by the individual member or the secretary of the local Association.

## ARTICLE V - Officers

## Section 1

The officers of the Missouri State Beekeepers' Association shall be:

President	Secretary
First Vice President - Programs	Treasurer
Second Vice President - Nominating	Editor

## Section 2

The officers shall be elected from the members of the Association for a term of one year.

Each duly elected officer shall serve until his successor has been duly elected.

## Section 3

There shall be three Directors who, with the elected officers, shall serve with the Executive committee. Each Director shall be elected for a three-year term, except that as originally elected terms shall be adjusted so that there-after only one Director shall be elected in any one year. Each Director shall serve until his successor is duly elected. In case a vacancy occurs, a Director shall be elected at the next annual meeting to serve out the unexpired term. A Board Member at Large shall be elected each year and each local Association shall elect one board member of the State Association each year to serve at the pleasure of the President.

## ARTICLE VI - Duties of Officers

## Section 1

The President shall preside at all meetings of the Executive Committee and the membership. He shall perform all duties commonly incident to his office and such other duties as may be assigned to him by the members.

## Section 2

The First Vice President shall perform the duties of the President in his absence. He shall be chairman of the Program Committee and shall assume the Presidency if it should become vacant.

## Section 3

The Second Vice President shall perform the duties of the First Vice President if he is absent or incapacitated. He shall be chairman of the Nominating Committee.

## Section 4

The Secretary shall keep accurate minutes of all meetings. He shall keep and maintain all records of the Association.

## Section 5

The Treasurer shall be responsible for the funds of the Association. All monies received shall be deposited in a bank designated by the Executive Committee. He shall make only such payments from the funds



of the Association as are authorized by the members of the Executive Committee. He shall maintain a record of all monies received and disbursed and make a report of accounts to the annual meeting of the members.

## Section 6

The Editor shall assemble information and instructions from the Executive Committee and publish same in the Quarterly Newsletter. He shall also assemble news from the local Associations and news items about the members of the Association and worthy news pertaining to the art of beekeeping and publish that information in the Quarterly Newsletter, keeping a copy of the letter for future reference.

## ARTICLE VII - Executive Committee

### Section 1

The Executive Committee shall be composed of the officers of the Association and the three Directors elected as provided in Article V of these By-Laws.

### Section 2

The Executive Committee shall designate the bank in which funds of the Association are to be deposited; approve disbursements; and otherwise carry on the business of the Association between meetings of the members. It shall report interim activities to the members at each meeting of the membership together with recommendations for approval of the members assembled.

## ARTICLE VIII - Committees

### Section 1

The standing committees of the Association shall be:

Program Committee  
Nominating Committee  
Auditing Committee

Members of these committees duly elected or appointed by the President shall serve for a term of one year or until a successor has been duly elected or appointed.

### Section 2

The President shall appoint such other committees as are authorized by the membership.

## ARTICLE IX - Meetings

## Section 1

The annual business meeting of the Association at which officers are elected shall be held in the fall of the year at a time and place determined by the Executive Committee, unless arrangements are made at a meeting of the members.

## Section 2

A short course or seminar followed by a short business meeting shall be held at the University of Missouri in Columbia, Missouri, in the spring of each year.

## ARTICLE X - Rules of Order

All meetings of the Association shall be conducted in accordance with the order of business and parliamentary rules set out in Roberts Rules of Order (Revised) where applicable. Any rule not covered in these By-Laws shall revert to Roberts Rules of Order (Revised) for clarification.

## ARTICLE XI - Amendments

These By-Laws may be amended by a vote of 2/3's of the members present and voting at any annual meeting of the membership, provided that a copy of the proposed amendments was mailed to all members at least 14 days prior to the meeting and was read at the last preceding meeting of the membership.

Approved \_\_\_\_\_

President \_\_\_\_\_

Secretary \_\_\_\_\_

MISSOURI STATE BEEKEEPERS' FALL MEETING  
 Nelson Community Center      Lebanon, Missouri  
 Saturday, October 25, 1960

- A.M.
- 8:30 - 9:00 Registration - no fee
- 9:00 - 9:05 Meeting called to order by President Jim Robins
- 9:05 - 9:10 Invocation by Reverend Clarence Feeney
- 9:10 - 9:15 Welcome by the Laclede County Beekeepers' Assn.
- 9:15 - 9:40 Display and presentation of arts and crafts pertaining to Bee Craft
- 9:40 - 10:00 Movie "Mating Behavior of the Honeybee" from Cornell University
- 10:00 - 10:30 Coffee and donuts (a chance for a close-up look at the arts and crafts)
- 10:30 - 10:45 Introduction of State and Local Association officers
- 10:45 - 11:45 MR. RICHARD HARRELL, SR., OF R. L. HARRELL AND SONS from Hayneville, Alabama
- 11:45 - 1:00 Lunch (Time to visit and talk bees)
- P.M.
- 1:00 - 2:00 REVEREND CLARENCE FEENEY - "HONEY PLANTS"
- 2:00 - 2:15 Break
- 2:15 - 3:15 MR. JIM STEWART - "FALL PRACTICES AND WINTER PREPARATIONS"
- 3:15 - 4:00 "Beekeeper of the Year" Award  
 Election of Officers  
 Other business
- 4:00 - 4:15 Attendance Prizes and Adjournment

EXECUTIVE BOARD MEETING - State officers and delegates from the local Associations plus other interested beekeepers will meet at the Wyota Best Western (Highway 66 East) on Friday evening, October 24, at 7:30 p.m. for a business session.

Please make your reservations early and please mention that you are with the Missouri State Beekeepers. The phone number is 417/532-6171.

CHANGE OF ADDRESS FOR THE EDITOR OF BEES & HONEY

As of September 1, 1968, Elbert R. Jaycox joined the Office of Agricultural Entomology of the Illinois Natural History Survey. His new address is 172 Natural Resources Building, Illinois Natural History Survey, Urbana, Illinois 61801.

\* \* \* \* \*

From Hazelwood, Fred Glose of General Motors sends us a story about four people names Everybody, Somebody, Anybody and Nobody. There was an important job to be done and Everybody was asked to do it. Everybody was sure Somebody would do it. Anybody could have done it. But Nobody did it. Somebody got angry about that, because it was Everybody's job. Everybody thought Anybody could do it, but Nobody realized that Everybody wouldn't do it. It ended up that Everybody blamed Somebody when Nobody did what Anybody could have done.

\* \* \* \* \*

Looking forward to seeing you at the Fall State Meeting!!!

Carol Boeckmann  
Editor

MISSOURI STATE BEEKEEPERS' ASSN.  
619 Mendelsohn Drive  
Kirkwood, Missouri 63122

ADDRESS CORRECTION REQUESTED

NON PROFIT ORGANIZATION  
U.S. POSTAGE PAID  
ST. LOUIS, MISSOURI  
PERMIT NO. 1152